

*Town of* **W**ARNER

*Office of the Selectmen  
Warner, New Hampshire*

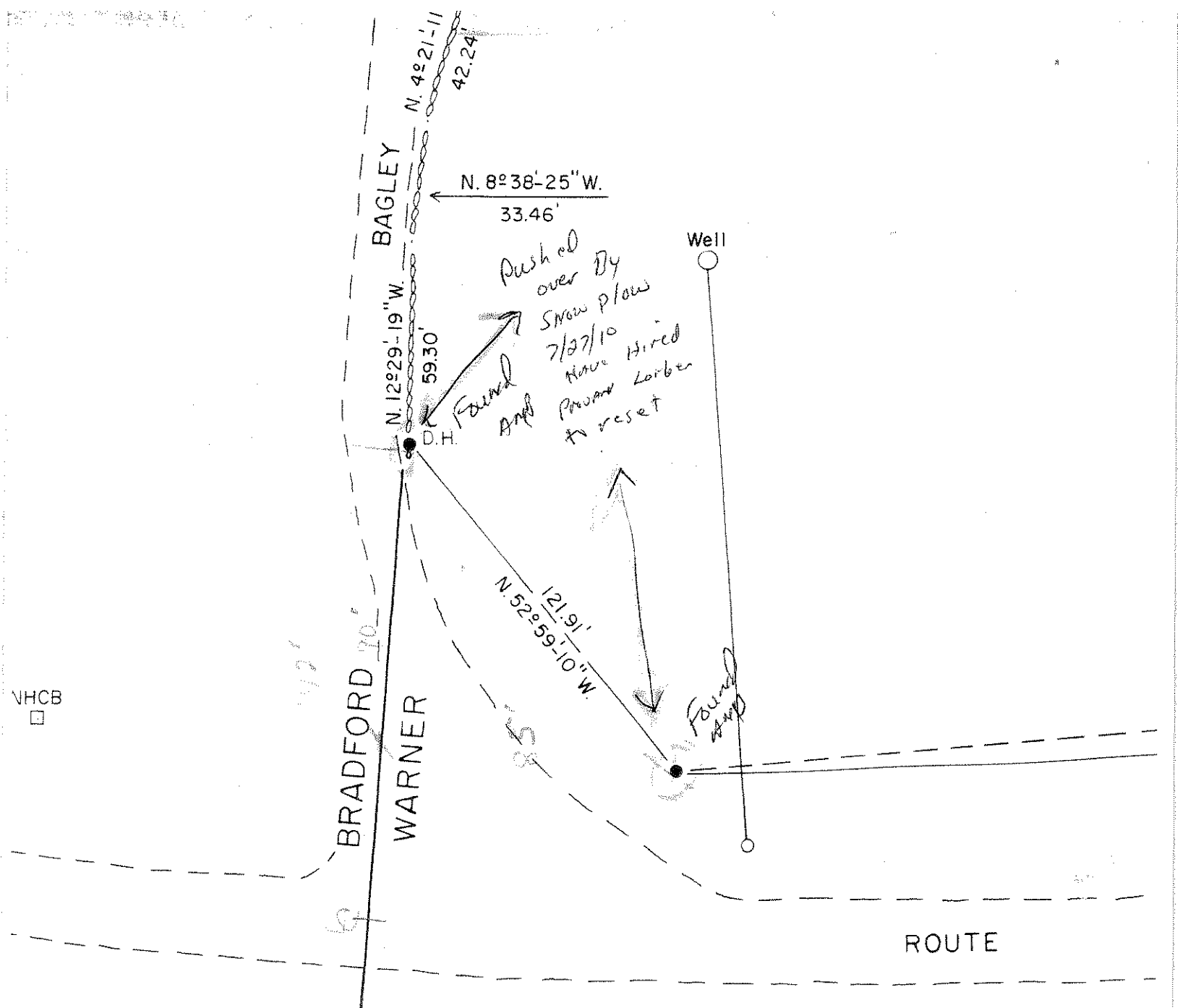
Page 1

Perambulation of the Town Line between Bradford and Warner 1958.

Pursuant to a notice by the Selectmen of Warner to the Selectmen of Bradford the undersigned met at the south west corner of Warner on the 4th day of May, 1958 for the purpose of perambulating the line between said Towns and renewing the bounds thereof according to law.

We began at a stone marked N.W. 1860, 1867, 1875, 1900, 1930 and 51 on the east side, standing on a stone wall on the North line of Henniker which is established as the Southwesterly corner of Warner and the Southeasterly corner of Bradford. This stone is about 40 rods East of a stone marked T L standing in a stone wall at right angles to the old Coach Road running more or less parallel to the present Bradford-Henniker road and no longer in use.

From thence we went North 12 degrees 15 minutes West 139 rods to a stone marked T L 1847, 74 and 51 standing against a wall on the North side of the Colby road; thence North 13 degrees 30 minutes West 131 rods to a beech tree marked T L 1881, 1930 on the South side B on the West and 4 on the North side, standing by the angle of the wall in the corner of lots 3 and 4. (We found that this tree had fallen and rotted to such an extent that no letters or numbers could be seen. Therefor we marked a stone in the corner of the wall 51. We also marked with the date 1951 a beechtree and stone in the same stone wall about 12 rods easterly of the aforementioned stone). Thence north 12 degrees 15 minutes West 89 rods to a wood post State Marker on State road Number 114 with Warner on one side Bradford on the other. Thence north 18 degrees 16 minutes west 89 rods to a stone on a large rock marked 1847, 1874, 81 and 51, 8/10ths of a rod easterly of a Bradford lot bound rock marked T L. Thence same course 23 rods to a stone marked T L in corner of lots 6 and 7; thence same course 176 rods to a cedar post and stones marked T L 1874, 95, 30 and 51, corner of lots 8 and 9. Thence North 12 degrees 30 minutes West 88 rods to a stone at the base of a stone wall where it joins with another at right angles marked T L 81, 1931 and 51 being in corner of lots 9 and 10. Thence north 13 degrees west 96 1/2 rods to a tall stone marked T L 1847, 74 and 51 at the southeast of the wall on the Hall ledge on the southeast corner of the B. F. Davis farm; thence north 11 degrees 30 minutes west 90 rods to a large rock marked T L 1874, 95, 30 and 51 standing to the westward of a road no longer in use. Thence north 13 degrees 15 minutes west 80 rods to the corner of lots 12 and 13 on the road now abandoned, 16 1/2 ft. from a stone marked with a cross and 88 standing against a wall on the easterly side of the road; thence North 11 degrees 45 minutes West 86 rods to a stone marked T L 1847, 74, 81 and 51 standing on the East side of the travelled road in a wall being the corner of lots 13 and 14. Thence same course about 58 1/2 rods to a stone post marked 74, 95 and 51 lying horizontally; thence same course 93 rods to a stone post standing between the rail-road and the Warner-Bradford road; thence same course about 26 1/2 rods to the wood post State Marker on State road number 103 with Warner on one side and Bradford on the other; thence North 11 degrees 30 minutes West 50 1/2 rods to a stone marked T L on the Westerly side



3  
off